

PARTS CATALOG

Duplex Unit-A1

Canon

Oct 12 2005

PREFACE

This Parts Catalog contains listings of parts used

Diagrams are provided with the listings to aid the service technician in identifying clearly, the item to be ordered.

Whenever ordering parts, consult this Parts Catalog for all of the information pertaining to each item. Be sure to include, in the Parts Request, the full item description, the item part number, and the quantity.

COPYRIGHT (C) 1999 CANON INC.

Use of this manual should be strictly supervised to avoid disclosure of confidential information.

Contents

NUMERICAL INDEX

Duplex Unit-A1	1-1
----------------------	-----

Duplex Unit-A1

SA	ASSEMBLY LOCATION DIAGRAM	2-1
S01	PACKING KIT	2-2
S20	DUPLEX FEEDER ASSEMBLY	2-4
S50	DUPLEX REVERSE UNIT	2-7

NUMERICAL INDEX

Duplex Unit-A1

PARTS NUMBER	FIGURE & KEY NO.	PARTS NUMBER	FIGURE & KEY NO.	PARTS NUMBER	FIGURE & KEY NO
FC6-6740-000	S20 - 23	VS1-7207-012	S01 - 9		
FC6-6752-000	S20 - 1	WG8-5696-000	S20 - 39		
FC6-6753-000	S20 - 2	XA9-1116-030	S20 - 21		
FC6-6754-000	S20 - 15	XB4-5401-007	S01 - 501		
FC6-6755-000	S20 - 3	XB4-5401-007	S20 - 501		
FC6-6756-000	S20 - 4	XB4-5401-007	S50 - 501		
FC6-6757-000	S20 - 5	XB6-7300-609	S01 - 502		
FC6-6758-000	S20 - 6	XD9-0136-000	S20 - 22		
FC6-6759-000	S20 - 7	XF2-1109-040	S20 - 29		
FC6-6759-000	S50 - 2	XF2-1112-240	S20 - 40		
FC6-6760-000	S20 - 8				
FC6-6764-000	S20 - 24				
FC6-6765-000	S20 - 9				
FC6-6767-000	S20 - 10				
FC6-6768-000	S20 - 11				
FC6-6769-000	S20 - 25				
FC6-6776-000	S20 - 12				
FC6-6777-000	S20 - 13				
FC6-6778-000	S01 - 5				
FC6-6779-000	S50 - 3				
FC6-6780-000	S50 - 4				
FC6-6781-000	S50 - 5				
FC6-6782-000	S01 - 1				
FC6-6783-000	S01 - 2				
FC6-6784-000	S01 - 3				
FK2-1114-000	S20 - 17				
FL2-3744-000	S20 - 26				
FL2-3746-000	S01 - 4				
FL2-3856-000	S20 - 14				
FM2-4493-000	S50 - 1				
FM2-4515-000	S20 - 41				
FM2-4516-000	S01 - 8				
FM2-4517-000	S20 - 30				
FM2-4518-000	S20 - 31				
FM2-4519-000	S20 - 32				
FM2-4520-000	S20 - 33				
FU5-8696-000	S20 - 16				
FU5-8697-000	S01 - 6				
FU5-8699-000	S01 - 7				
FU6-0933-000	S20 - 18				
FU6-0934-000	S20 - 19				
FU6-0935-000	S20 - 34				
FU6-0936-000	S20 - 20				
FU6-0937-000	S20 - 35				
FU6-0938-000	S20 - 27				
FU6-0939-000	S20 - 28				
FU6-0940-000	S20 - 36				
FU6-2387-000	S20 - 37				
FU6-2388-000	S20 - 38				
NPN	S01 -				
NPN	S20 -				
NPN	S50 -				

Duplex Unit-A1

Dulpex Unit-A1

F28-0121-000 SLW

Contents

SA	ASSEMBLY LOCATION DIAGRAM	2-1
S01	PACKING KIT	2-2
S20	DUPLEX FEEDER ASSEMBLY	2-4
S50	DUPLEX REVERSE UNIT	2-7

FIGURE SA ASSEMBLY LOCATION DIAGRAM

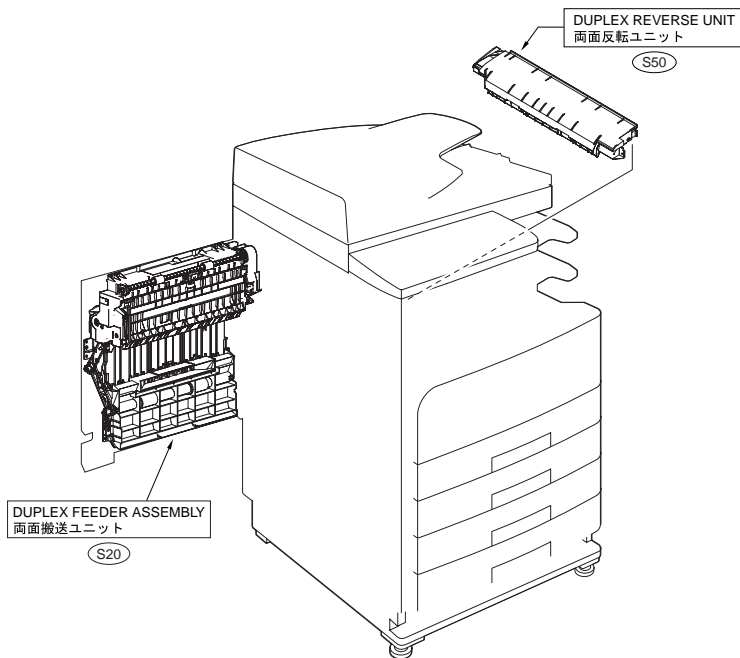


FIGURE S01 PACKING KIT

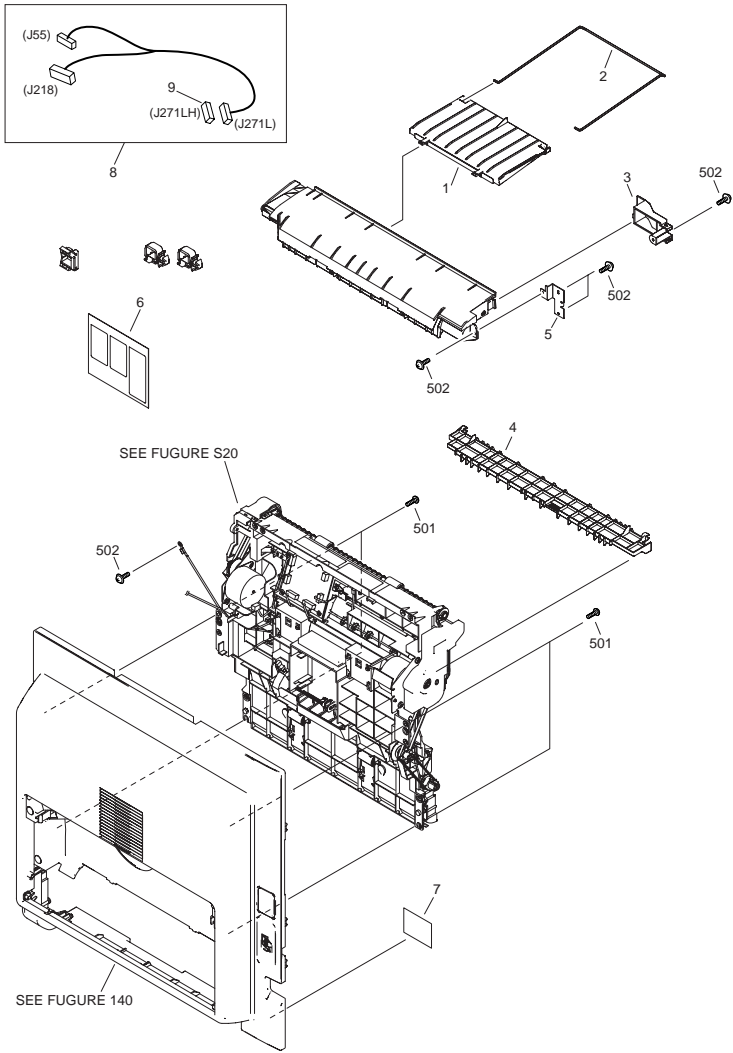


FIGURE & KEY NO.	PARTS NUMBER	R A N K	Q'TY	DESCRIPTION	SERIAL NUMBER/ REMARKS	S V C
Fig.S01	NPN		RF	PACKING KIT		
1	FC6-6782-000		1	TRAY, REVERSE		
2	FC6-6783-000		1	TRAY, SUB		
3	FC6-6784-000		1	COVER, REVERSE GUIDE		
4	FL2-3746-000		1	GUIDE, DELIVERY		
5	FC6-6778-000		1	MOUNT, REVERSE GUIDE		
6	FU5-8697-000		1	LABEL, JAM CLEAR		
7	FU5-8699-000		1	LABEL, JAM CLEAR		
8	FM2-4516-000		1	CABLE, DUPLEX UNIT	J55,218,271L	
9	VS1-7207-012		1	CONNECTOR	J271LH	
501	XB4-5401-007		4	SCREW, M4X10		
502	XB6-7300-609		5	SCREW, MACH, PAN HEAD		

FIGURE S20 DUPLEX FEEDER ASSEMBLY

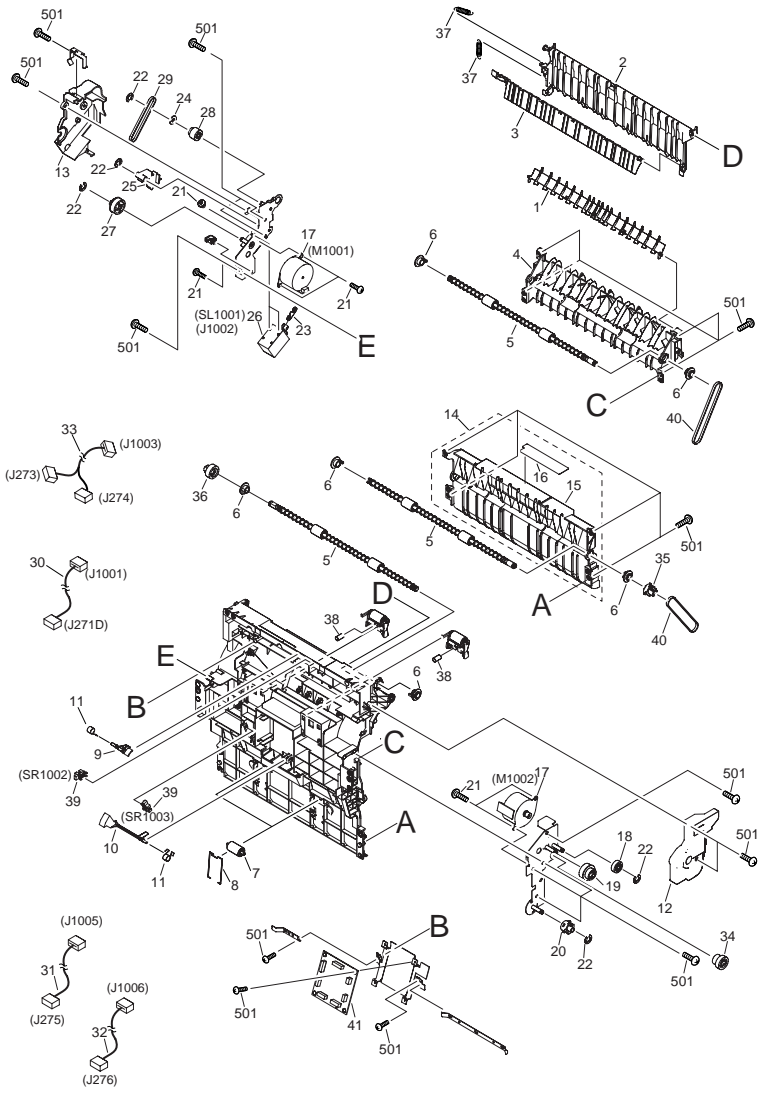


FIGURE & KEY NO.	PARTS NUMBER	R A N K	Q'TY	DESCRIPTION	SERIAL NUMBER/ REMARKS	S V C
Fig.S20	NPN		RF	DUPLEX FEEDER ASSEMBLY		
1	FC6-6752-000		1	DEFLECTOR, REVERSE		
2	FC6-6753-000		1	GUIDE, DUPLEX SWING		
3	FC6-6755-000		1	DEFLECTOR, DUPLEX		
4	FC6-6756-000		1	GUIDE, RIGHT UPPER		
5	FC6-6757-000		3	ROLLER		
6	FC6-6758-000		6	BUSHING		
7	FC6-6759-000		4	ROLLER		
8	FC6-6760-000		2	SPRING, ROLLER		
9	FC6-6765-000		1	FLAG, REVERSE SENSOR		
10	FC6-6767-000		1	FLAG, FEEDER SENSOR		
11	FC6-6768-000		2	SPRING, TORSION		
12	FC6-6776-000		1	COVER, DUPLEX, FRONT		
13	FC6-6777-000		1	COVER, DUPLEX, REAR		
14	FL2-3856-000		1	GUIDE, RIGHT, LOWER		
15	FC6-6754-000		1	GUIDE, RIGHT, LOWER		
16	FU5-8696-000		1	LABEL, OPERATION PROHIBITION		
17	FK2-1114-000		2	MOTOR, STEPPING	M1001,1002	
18	FU6-0933-000		1	GEAR, 47T/17T		
19	FU6-0934-000		1	GEAR, 18T		
20	FU6-0936-000		1	GEAR, 28T		
21	XA9-1116-030		11	SCREW, 3X5		
22	XD9-0136-000		5	RING, E		
23	FC6-6740-000		1	PLATE, LINK		
24	FC6-6764-000		1	FLANGE		
25	FC6-6769-000		1	PLATE, LINK		
26	FL2-3744-000		1	SOLENOID	SL1001 J1002	
27	FU6-0938-000		1	GEAR, 47T/22T		
28	FU6-0939-000		1	GEAR, 22T/17T		
29	XF2-1109-040		1	BELT, TIMING		
30	FM2-4517-000		1	CABLE, DUPLEX RELAY	J271D,1001	
31	FM2-4518-000		1	CABLE, DUPLEX MOTOR	J275,1005	

FIGURE & KEY NO.	PARTS NUMBER	RANK	Q'TY	DESCRIPTION	SERIAL NUMBER/REMARKS	SVC
32	FM2-4519-000		1	CABLE, REVERSE MOTOR	J276,1006	
33	FM2-4520-000		1	CABLE, DUPLEX SENSOR	J273,274,1003	
34	FU6-0935-000		1	GEAR, 21T/28T		
35	FU6-0937-000		1	GEAR, 28T		
36	FU6-0940-000		1	GEAR, 21T		
37	FU6-2387-000		2	SPRING, TENSION		
38	FU6-2388-000		2	SPRING, COMPRESSION		
39	WG8-5696-000		2	PHOTO INTERRUPTER, RLP1243	SR1002,1003	
40	XF2-1112-240		2	BELT, TIMING		
41	FM2-4515-000		1	PWB, DUPLEX DRIVER		
501	XB4-5401-007		20	SCREW, M4X10		

FIGURE S50 DUPLEX REVERSE UNIT

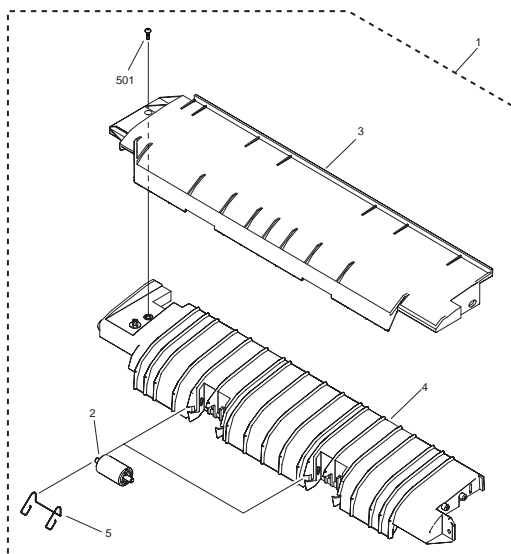


FIGURE & KEY NO.	PARTS NUMBER	RANK	Q'TY	DESCRIPTION	SERIAL NUMBER/REMARKS	SVC
Fig.S50	NPN		RF	DUPLEX REVERSE UNIT		
1	FM2-4493-000		1	DUPLEX REVERSE UNIT		
2	FC6-6759-000		2	ROLLER		
3	FC6-6779-000		1	GUIDE, REVERSE UPPER		
4	FC6-6780-000		1	GUIDE, REVERSE, LOWER		
5	FC6-6781-000		2	SPRING, ROLLER		
501	XB4-5401-007		1	SCREW, M4X10		

Prepared by
OIP HFE Promotion Center
CANON INC.

Canon